

Endostar E3 Azure.

Enjoy the difference. The power of Azure.



www.endostar.eu

endo★star

Innovation and safety

Endostar E3 Azure is an efficient system created with Azure HT Technology which is our specially designed heat-treatment manufacturing process. The goal of Azure HT Technology was to create files that are extremely flexible and resistant to breaking even in the most complicated clinical cases.

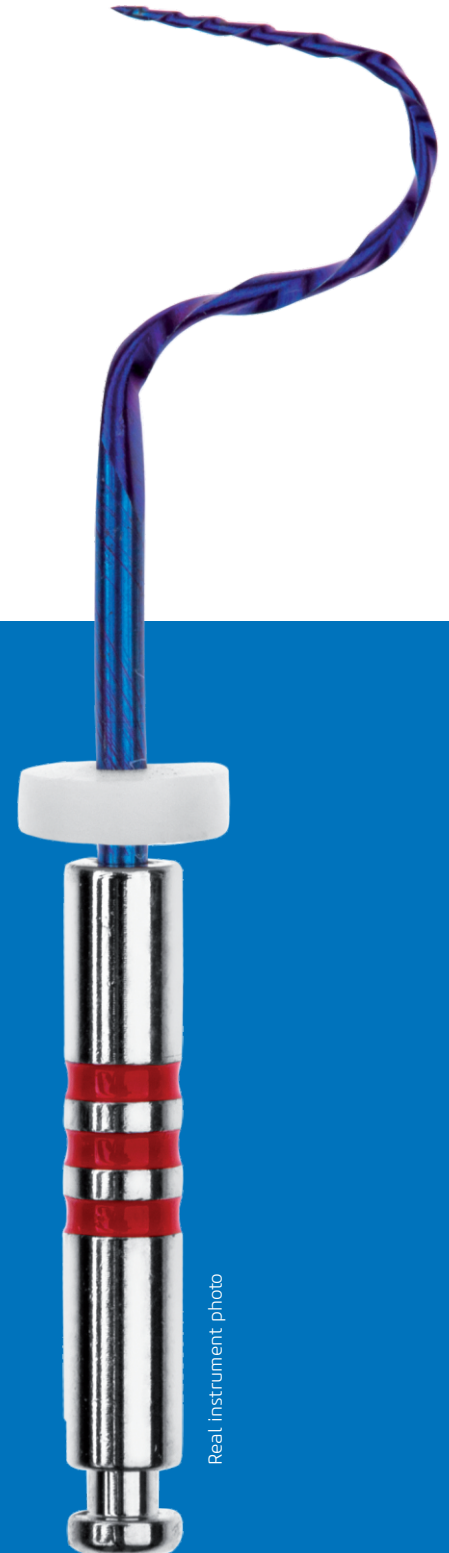
Endostar E3 Azure

- > **safe** - increased breaking resistance,
- > **extremely flexible** - follows even the most curved canal path,
- > **effective and easy** to use.

Azure HT Technology - Color of Power

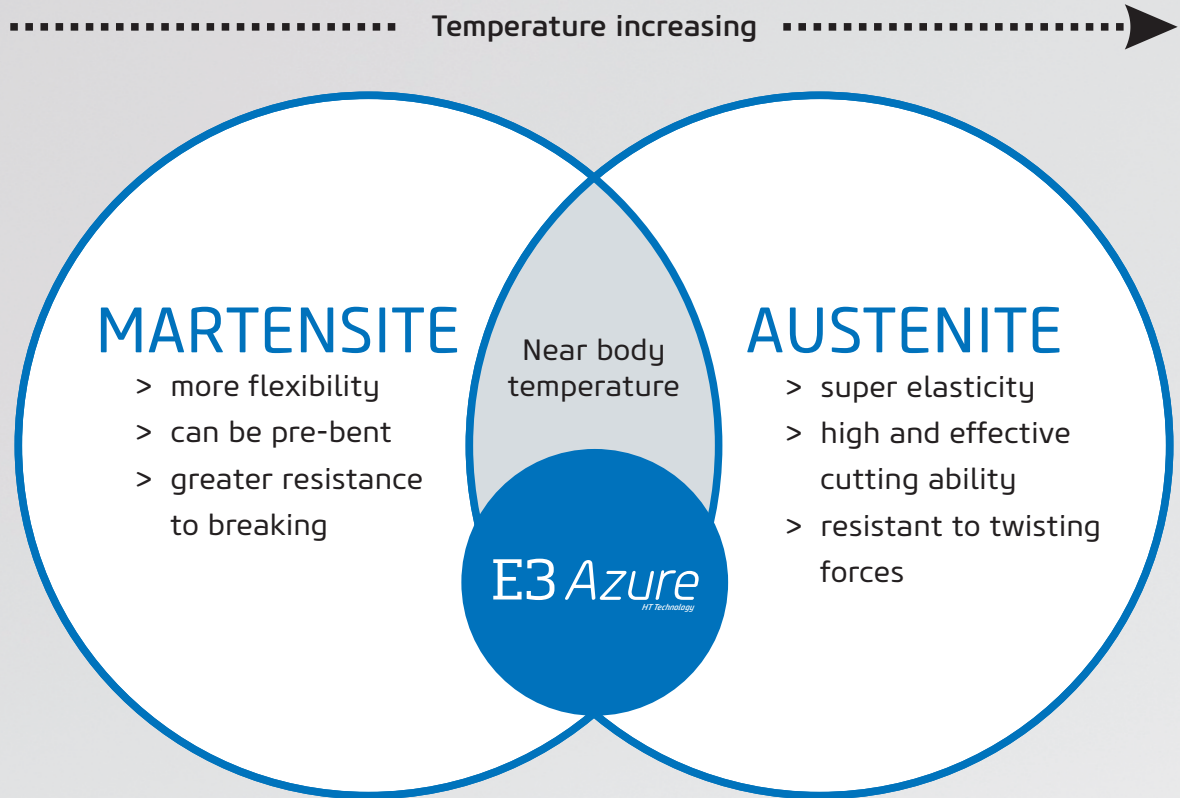
The Azure HT Technology process modifies the crystal structure of the nickel-titanium files. It allows for the martensite to austenite transformation to occur at near body temperature.

This process completely changes the properties of the files. The files can pre-bend before being inserted into the canal. They can easily follow even the most curved canal path, with a minimal risk of perforation, ledges or via falsa.



Real instrument photo

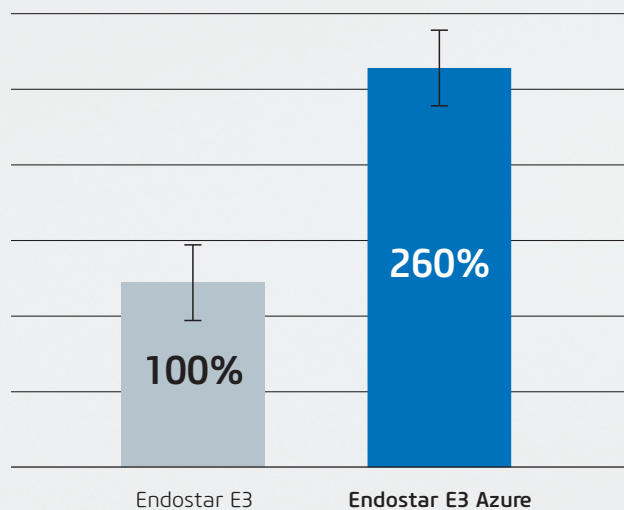
Feel the significant difference.
New and unique.



During root canal treatment (at near body temperature) the file uses the advantages, both of the martensite and austenite phases.

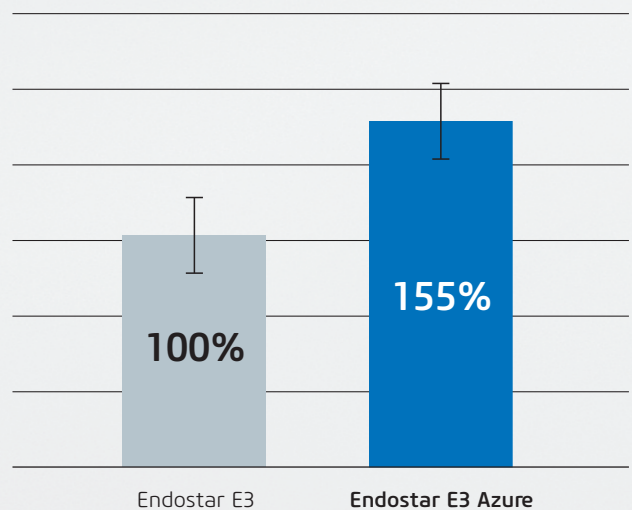
Flexibility

Increased flexibility thanks to Azure HT Technology*



Resistance

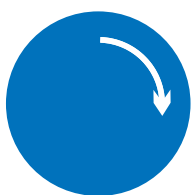
Increased resistance to twisting forces compared to standard rotary instruments.



* Internal studies performed according to ISO standards.

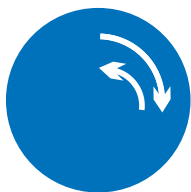
Do it your way

We aimed at designing a new user-friendly system, which would be flexible, efficient and safe. We had no intention to change doctor's habits. Endostar E3 Azure was designed for 3 common types of the motion to achieve a perfect root canal preparation. The system is compatible with most of the handpieces.



Rotary motion

The instruments rotate clockwise and with a set speed (CW - clock wise).



Reciprocal motion right cutting

The instruments perform alternating clockwise (CW) and counter clockwise (CCW) movements; the angle of clockwise (CW) rotation must be larger than counterclockwise rotation (CCW) e.g. 90 degrees CW and 30 degrees CCW.

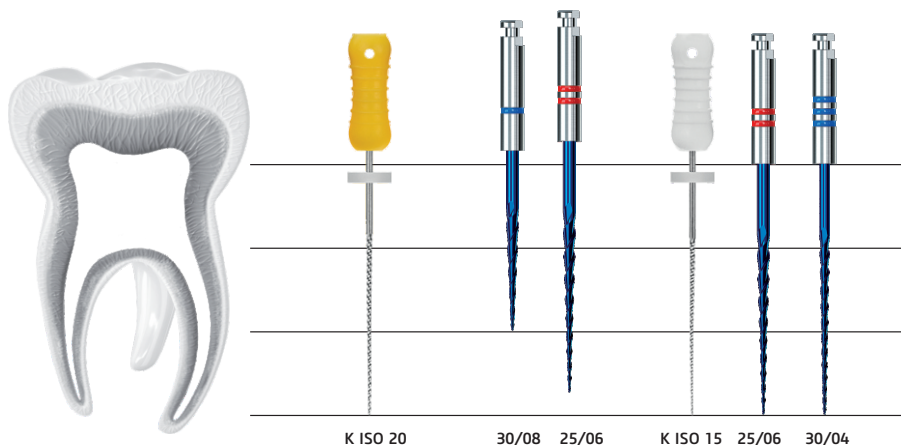


Complex motion

Combines the rotary and reciprocal motion. The files rotate until too high resistance in the canal is met. Then the reciprocal mode is activated (CW - CCW, net CW). Rotation mode is turned on again when the resistance returns to acceptable level. An example of complex motion is the OTR mode available in the Endostar Provider endomotor.



The Endostar E3 Azure Basic sequence



Endostar E3 Azure



Recommended torque

System	File number	Standard Torque (Ncm)	Advanced Torque (Ncm)
E3 Azure Basic	1 (30/08)	2.4	3.0
	2 (25/06)	2.1	3.0
	3 (30/04)	1.2	2.1
E3 Azure Big	1 (35/04)	2.1	3.0
	2 (40/04)	2.1	3.0
	3 (45/04)	2.1	3.0
E3 Azure Small	1 (20/06)	1.2	2.1
	2 (25/04)	1.2	2.1
	3 (20/04)	1.2	2.1

Clinical cases

Dr Amr Elwi



Before

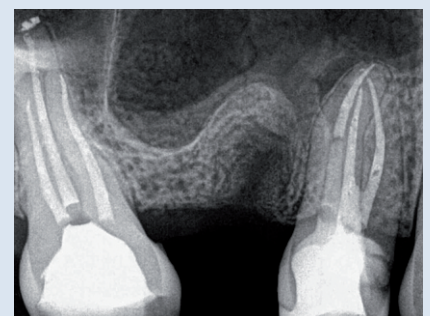


After

Dr Piotr Wujec



Before



After

Product information



30/08 25/06 30/04

Straight, lightly or moderately curved canals.



20/06 25/04 20/04

Narrow and curved canals.



35/04 40/04 45/04

Wide canals.

Endostar E3 Azure Basic

E3AZ21 Set

30/08, 25/06, 30/04, 21 mm, 3 pcs

E3AZ25 Set

30/08, 25/06, 30/04, 25 mm, 3 pcs

E3AZ29 Set

30/08, 25/06, 30/04, 29 mm, 3 pcs

E3AZ250621 25/06, 21 mm, 6 pcs

E3AZ250625 25/06, 25 mm, 6 pcs

E3AZ250629 25/06, 29 mm, 6 pcs

E3AZ300421 30/04, 21 mm, 6 pcs

E3AZ300425 30/04, 25 mm, 6 pcs

E3AZ300429 30/04, 29 mm, 6 pcs

E3AZ300818 30/08, 18 mm, 6 pcs

Endostar E3 Azure Small

E3AZS21 Set

20/06, 25/04, 20/04, 21 mm, 3 pcs

E3AZS25 Set

20/06, 25/04, 20/04, 25 mm, 3 pcs

E3AZS29 Set

20/06, 25/04, 20/04, 29 mm, 3 pcs

E3AZ200421 20/04, 21 mm, 6 pcs

E3AZ200425 20/04, 25 mm, 6 pcs

E3AZ200429 20/04, 29 mm, 6 pcs

E3AZ200621 20/06, 21 mm, 6 pcs

E3AZ200625 20/06, 25 mm, 6 pcs

E3AZ200629 20/06, 29 mm, 6 pcs

E3AZ250421 25/04, 21 mm, 6 pcs

E3AZ250425 25/04, 25 mm, 6 pcs

E3AZ250429 25/04, 29 mm, 6 pcs

Endostar E3 Azure Big

E3AZB21 Set

35/04, 40/04, 45/04, 21 mm, 3 pcs

E3AZB25 Set

35/04, 40/04, 45/04, 25 mm, 3 pcs

E3AZB29 Set

35/04, 40/04, 45/04, 29 mm, 3 pcs

E3AZ350421 35/04, 21 mm, 6 pcs

E3AZ350425 35/04, 25 mm, 6 pcs

E3AZ350429 35/04, 29 mm, 6 pcs

E3AZ400421 40/04, 21 mm, 6 pcs

E3AZ400425 40/04, 25 mm, 6 pcs

E3AZ400429 40/04, 29 mm, 6 pcs

E3AZ450421 45/04, 21 mm, 6 pcs

E3AZ450425 45/04, 25 mm, 6 pcs

E3AZ450429 45/04, 29 mm, 6 pcs

X-tra configurations

E3AZSS25BL Small & Small set, 6 pcs, 25 mm

E3AZBS21BL Basic & Small set, 6 pcs, 21 mm

E3AZBS25BL Basic & Small set, 6 pcs, 25 mm

E3AZBS29BL Basic & Small set, 6 pcs, 29 mm

Ver. 3, October 2024

Poldent Co. Ltd.

Dzika 2 Street, 00-194 Warsaw, Poland

Phone: +48 22 351 76 50

E-mail: endostar@endostar.eu

www.endostar.eu



endo★star